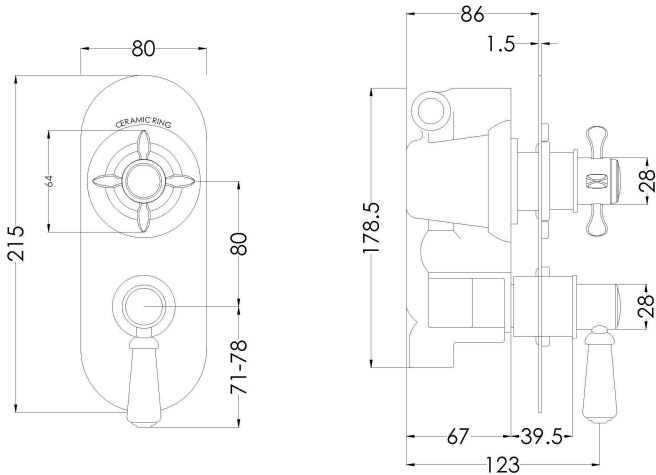


TECHNICAL DATA SHEET



Product Image



Product Line Drawing

SHOWERS
SHE5314
Restore Twin Concealed Valve

PRODUCT DETAILS						
Height:	215					
Width:	80					
Depth:	135					
Length:						
Nett Weight:	2.5					
Country of Origin:	United Kingdom					
Fitting Instruction:	Yes					
Product Material:	Brass/ABS					
TMV2 Approval:	Yes	Number: Bc1875/0817				
TMV3 Approval:	Yes	Number: Bc1119/1212				
WRAS Approval:	Yes	Number: 1703023				
Operating Pressure (Bar):	0.1					
Flow Rate (Bar / Ltr per min):	0.1/ 5.5	0.5/ 14	1/ 20	2/ 29	3/ 44	
Valve / Cartridge Type:	1/4 Turn Ceramic Disc					
Colour / Finish:	Chrome					
Mount Type:	Recessed, Wall					
Outlet Elbow Supplied:	No					
Pipe Size:	15 mm (1/2" Bsp)		Centres: 150mm			
Easy Clean:	Not Applicable					
Head Included:	No	Function: Not Applicable				
Handset Included:	No	Function: Not Applicable				
Body Jets Included:	No	Quantity: Not Applicable				
Hose Included:	Not Applicable					

PACKAGING DETAILS									
Height:	110								
Width:	240								
Length:	250								
Gross Weight:	2.5								
Box Colour:	White Cardboard Box Quantity: 1								
Label Colour:	White Label Quantity: 1								
Label Size:	100 x 50								
Barcode:	5056211809579								