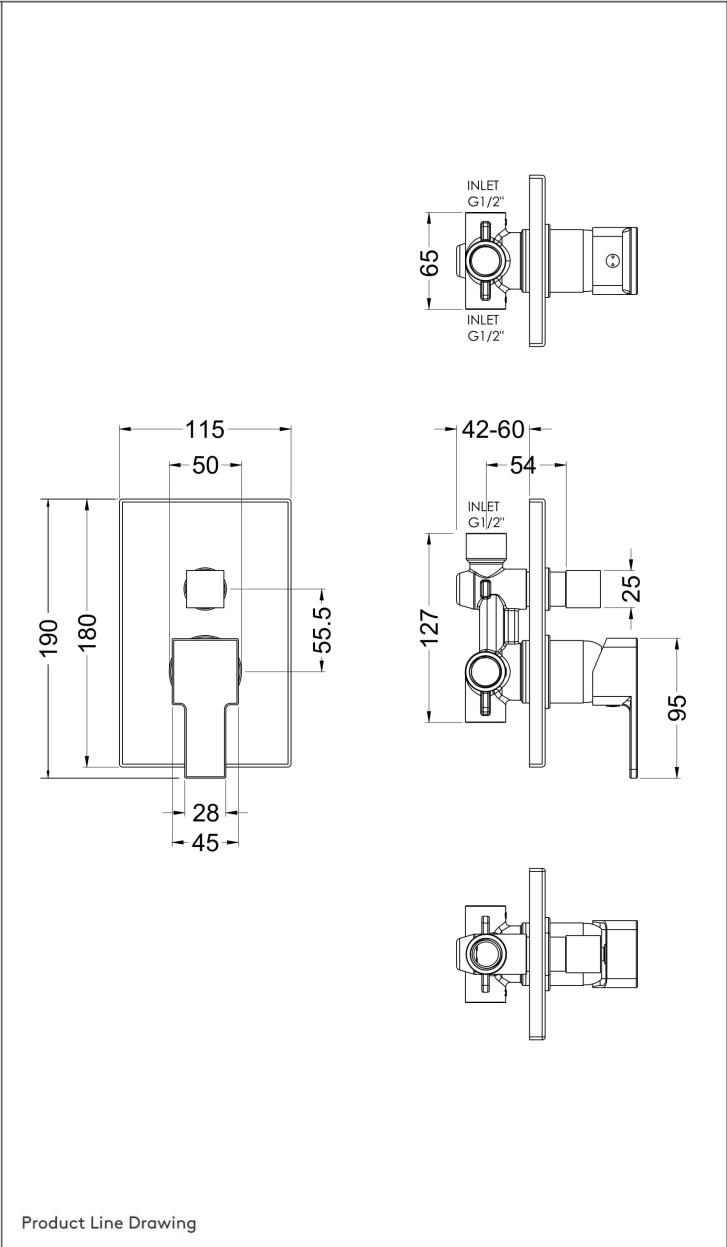


TECHNICAL DATA SHEET



SHOWERS

SHC5112

Revival Manual Shower Valve W/Div

PRODUCT DETAILS

Height:	180		
Width:	115		
Depth:	110		
Length:			
Nett Weight:	1.12		
Country of Origin:	United Kingdom		
Fitting Instruction:	Yes		
Product Material:	Brass/ABS		
TMV2 Approval:	No	Number: N/A	
TMV3 Approval:	No	Number: N/A	
WRAS Approval:	No	Number: N/A	
Operating Pressure (Bar):	0.5		
Flow Rate (Bar/Ltr per min):	0.1/3.7 0.5/8.4 1/11.9 2/16.9 3/20.8		
Valve/Cartridge Type:	Single Lever Cartridge		
Colour/Finish:	Chrome		
Mount Type:	Wall, Recessed		
Outlet Elbow Supplied:	No		
Pipe Size:	15 mm (1/2" Bsp)	Centres: N/A	
Easy Clean:	Not Applicable		
Head Included:	No	Function: Not Applicable	
Handset Included:	No	Function: Not Applicable	
Body Jets Included:	No	Quantity: Not Applicable	
Hose Included:	Not Applicable		

PACKAGING DETAILS

Height:	150		
Width:	205		
Length:	170		
Gross Weight:	1.12		
Box Colour:	White Cardboard Box Quantity: 1		
Label Colour:	White Label	Quantity: 1	
Label Size:	100 x 50		
Barcode:	5056211808763		