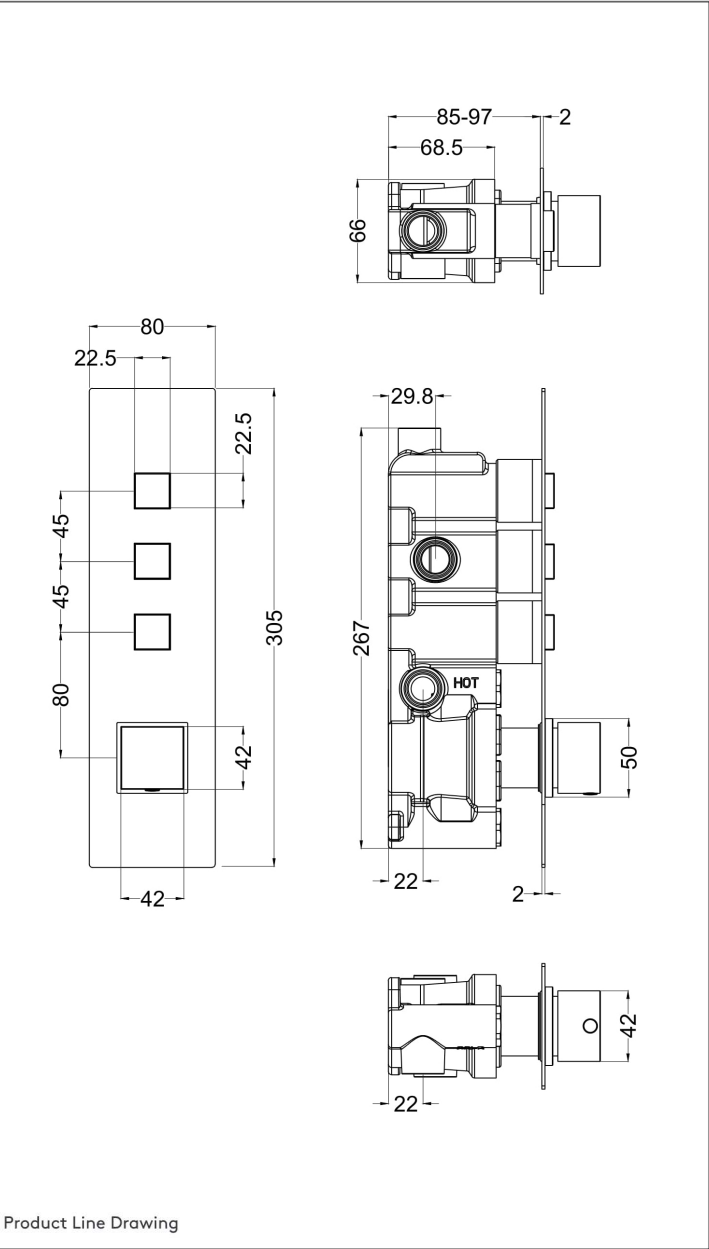


Product Image



Product Line Drawing

PRODUCT DETAILS					
Height:	305				
Width:	80				
Depth:	135				
Length:					
Nett Weight:	2.5				
Country of Origin:	United Kingdom				
Fitting Instruction:	Yes				
Product Material:	Brass/ABS				
TMV2 Approval:	No	Number: N/A			
TMV3 Approval:	No	Number: N/A			
WRAS Approval:	No	Number: N/A			
Operating Pressure (Bar):	3				
Flow Rate (Bar/Ltr per min):	0.1/N/A	0.5/N/A	1/N/A	2/N/A	3/ 28
Valve/Cartridge Type:	Push Button				
Colour/Finish:	Chrome				
Mount Type:	Recessed, Wall				
Outlet Elbow Supplied:	No				
Pipe Size:	15 mm (1/2" Bsp)		Centres: N/A		
Easy Clean:	Not Applicable				
Head Included:	No	Function: Not Applicable			
Handset Included:	No	Function: Not Applicable			
Body Jets Included:	No	Quantity: Not Applicable			
Hose Included:	Not Applicable				
PACKAGING DETAILS					
Height:	125				
Width:	360				
Length:	240				
Gross Weight:	2.5				
Box Colour:	White Cardboard Box Quantity: 1				
Label Colour:	White Label		Quantity: 1		
Label Size:	100 x 50				
Barcode:	5056211808749				